

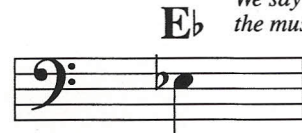
# Lesson 1



4th position



1st position



3rd position

*We say E flat, but the music says flat E.*

## Looking Down

CD #1 Tracks 1 (♩=104), 21 (♩=92), 42 (solos)  
Intro: 4 measures (no repeats or intros on solos)



*This is a new measure, so we have to use a flat sign the first time the note E<sup>b</sup> happens.*

*The flat sign on the first note applies not only to that note, but every time that note comes in the same measure. All the notes in this measure are E<sup>b</sup>.*

*Notice the repeat sign (go back to the beginning and play the line again)*

## Looking Up

CD #1 Tracks 2 (♩=104), 22 (♩=92), 42 (solos)  
Intro: 4 measures (no repeats or intros on solos)



## Try for Three

CD #1 Tracks 3 (♩=104), 23 (♩=96), 43 (solos)  
Intro: 2 measures (no repeats or intros on solos)



*This song starts with a mi re do pattern. A song is in the Key of E<sup>b</sup> when do is E<sup>b</sup>*

*A key signature indicates which notes are flat or sharp throughout a piece. Our first songs are all in the Key of E<sup>b</sup>, which has three flats. The second flat is E<sup>b</sup>, and means that all E's are automatically flat in this line, without putting a flat sign in front of each note. The other flats apply to notes we will learn later.*

## Good to be Home

CD #1 Tracks 4 (♩=92), 24 (♩=80), 44 (solos)  
Intro: 2 measures (no repeats or intros on solos)



*In the Key of E<sup>b</sup>, the note E<sup>b</sup> feels like "home".*